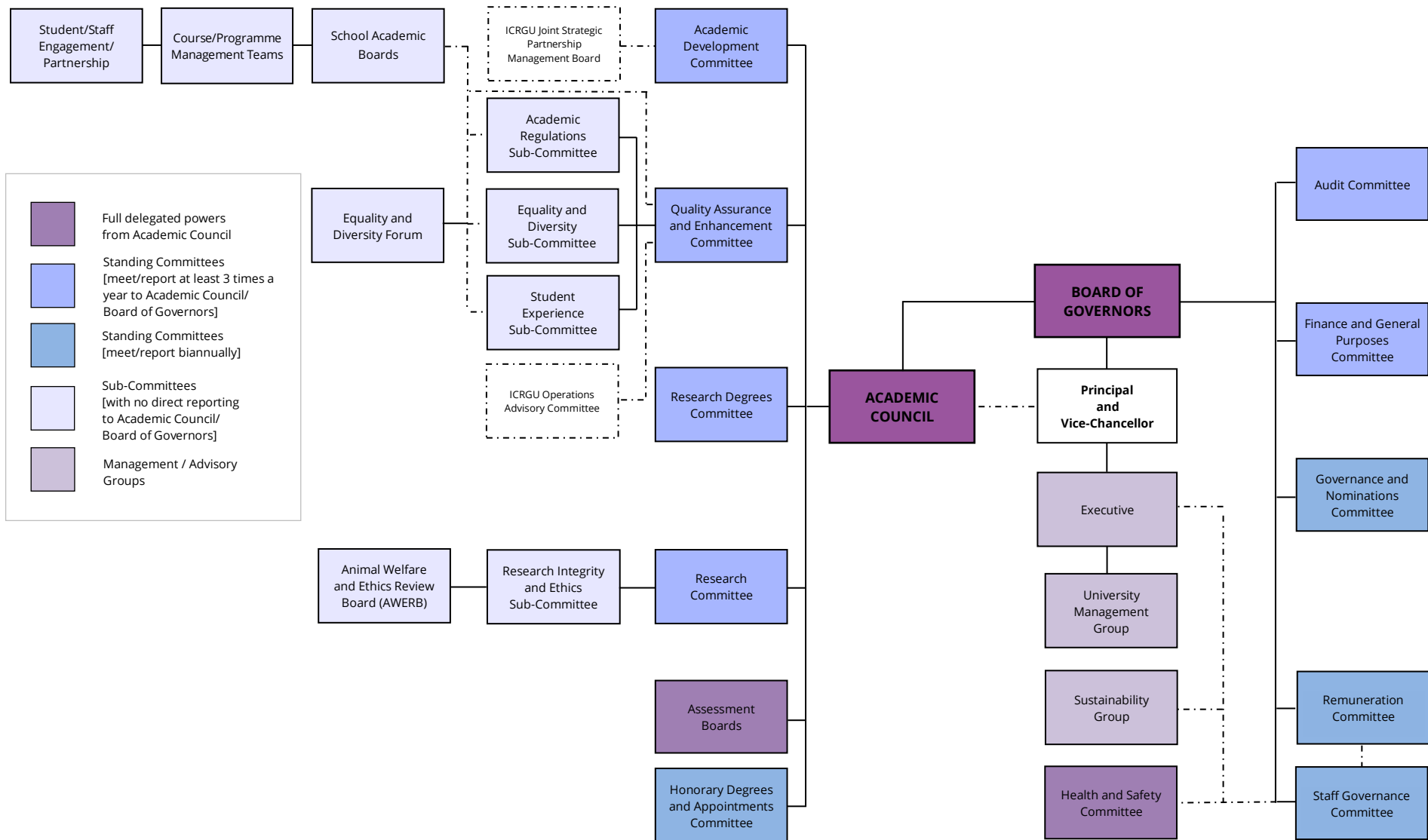


## COMMITTEE STRUCTURE

This diagram, when accessed via the Department for Governance and Academic Quality website, can be used interactively to view remits, memberships etc by clicking on the appropriate committee title [[www.rgu.ac.uk/committeestructure](http://www.rgu.ac.uk/committeestructure)]



The following Committees meet and report on a need's basis:

- Student Appeals Committee [[www.rgu.ac.uk/StudentAppealsCommittee](http://www.rgu.ac.uk/StudentAppealsCommittee)];
- Chair's Committee [[www.rgu.ac.uk/ChairsCommittee](http://www.rgu.ac.uk/ChairsCommittee)].