

YOUR HEALTH

INFO ON LOCAL HEALTH SERVICES
CITY CENTER



DOCTOR/GP MEDICAL PRACTICE

(You will need to register with a GP near to your address)

Denburn

Medical Practice

Rosemount Viaduct
ABERDEEN
AB25 1QB
0345 337 0520

Rosemount

Medical Group

1 View Terrace
ABERDEEN
AB25 2RS
0345 337 0520

Calsayseat

Medical Practice

44 Powis Place
ABERDEEN
AB25 3TX
0345 337 6370

PHARMACY/CHEMIST

Boots

Bon Accord Centre
Aberdeen
AB25 1UH
01224 626080

Rosemount Pharmacy

1 Mount Street
Aberdeen
AB25 2RA
01224 630101

Superdrug

St Nicholas Centre,
Aberdeen
AB10 1HW
01224 647440



DENTIST

i-smile Dental Clinic

322 George St
Aberdeen
AB25 1HJ
01224 643469

Rosemount Dental

230 Rosemount Pl
Aberdeen
AB25 2XT
01224 64524

Union Street Dental

129 Union Street
Aberdeen
AB11 6BH
01224 583260



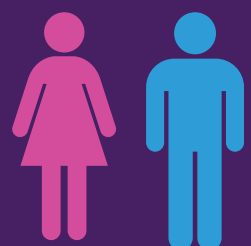
SEXUAL HEALTH

Grampian Sexual Health

The Aberdeen Community Health and Care Village

50 Frederick Street, Aberdeen AB24 5HY

0345 456 6000



Phone 111 for NHS 24 for out-of-hours medical advice
Phone 0345 45 65 990 for DIAL (Dental Info & Advice Line)

YOUR HEALTH

INFO ON LOCAL HEALTH SERVICES
KING STREET AREA



DOCTOR/GP MEDICAL PRACTICE

(You will need to register with a GP near to your address)

Links

Medical Practice

Urquhart Road
Aberdeen
AB24 5AU
0345 337 6340

Old Machar

Medical Practice

526 King Street
Aberdeen
AB24 5RS
0345 337 0510

Calsayseat

Medical Practice

44 Powis Place
ABERDEEN
AB25 3TX
0345 337 6370



PHARMACY/CHEMIST

Bairds Pharmacy

519a King Street
Aberdeen
AB24 3BT
01224 483783

Rowlands Pharmacy

City Hospital, Park Rd
Aberdeen
AB24 5AU
01224 636597

Morrisons Supermarket

215 King Street
Aberdeen
AB24 5DA
01224 624404



DENTIST

Old Town Dental

519 King Street
Aberdeen
AB24 3BT
01224 483666

Old Aberdeen Dental

7 Elphinstone Road
Aberdeen
AB24 3EF
01224 274230

King Street Dental

173 King Street
Aberdeen
AB24 5AE
01224 640759

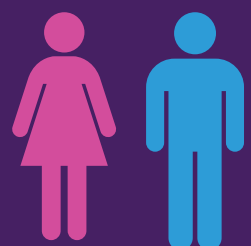
SEXUAL HEALTH

Grampian Sexual Health

The Aberdeen Community Health and Care Village

50 Frederick Street, Aberdeen AB24 5HY

0345 456 6000



Phone 111 for NHS 24 for out-of-hours medical advice
Phone 0345 45 65 990 for DIAL (Dental Info & Advice Line)

YOUR HEALTH

INFO ON LOCAL HEALTH SERVICES
GARTHDEE AREA



DOCTOR/GP MEDICAL PRACTICE

(You will need to register with a GP near to your address)

**Garthdee
Medical Group**
Garthdee Road
ABERDEEN
AB10 7QQ
01224 208312

**Whinhill
Medical Practice**
20 Whinhill Road
Aberdeen
AB11 7XH
0345 337 6201

**Holburn
Medical Group**
7 Albyn Place
ABERDEEN
AB10 1YE
01224 895116

PHARMACY/CHEMIST

Boots
1 Garthdee Road
Aberdeen
AB10 7AY
01224 318792

E I Mackie
7 Ramsay Crescent
Aberdeen
AB10 7BL
01224 318689

Holburn Pharmacy
560 Holburn Street
Aberdeen
AB10 7LJ
01224 581685



DENTIST

mydentist
21 Springfield Road
Aberdeen
AB15 7RJ
01224 209286

Holburn Dental Care
616 Holburn Street
Aberdeen
AB10 7JQ
01224 588210

West End Dental
189 Great Western Rd
Aberdeen
AB10 6PS
01224 224224



SEXUAL HEALTH

Grampian Sexual Health
The Aberdeen Community Health and Care Village
50 Frederick Street, Aberdeen AB24 5HY
0345 456 6000



Phone 111 for NHS 24 for out-of-hours medical advice
Phone 0345 45 65 990 for DIAL (Dental Info & Advice Line)